

RCD Lockinge

Tritium & Carbon-14 Analysis & Consultancy

RCD Lockinge, a small private laboratory established in 1990, specialises in the measurement of tritium and carbon-14 for numerous applications. Customers include UKAEA, BNFL Magnox, AWE and various private organisations.

Environmental and Discharge Sampling



Air sampling around nuclear establishments and from discharge and vent stacks



Development of air/stack sampling equipment for use in the field and the workplace



Development of methods for passive samplers for environmental and closed area applications (no power supplies required)

Material Measurements

Measurement of total tritium activity in a variety of materials, eg wood, concrete, metals, oil etc



Routine measurements of Carbon-14 at environmental levels and above in air, vegetables, milk etc



Measurement of tritium as free water and organically bound in materials such as fish, vegetables and milk

Other Measurements

Studies of methane and water from waste sites



Routine measurement of carbon-14 for art history, hydrology, archaeology, and geology

Forensic studies

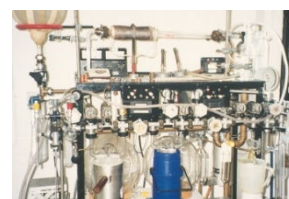
Groundwater investigations



Equipment

Equipment at RCD includes:

- state of the art liquid scintillation counters,
- purpose built vacuum rigs for benzene synthesis,
- vacuum extraction and high pressure combustion
- electrolytic apparatus for measurement of tritium down to 0.1 Bq/l.



Location

The laboratory is situated in Oxfordshire in the village of East Lockinge near Wantage

RCD Lockinge
The Old Stables,
East Lockinge,
Wantage, Oxfordshire,
UK, OX12 8QY

Tel/Fax: +44 1235 833667

e-mail: rcd.lockinge@virgin.net



If you have any questions on tritium and/or carbon-14 please get in touch with one of the principals of the firm, Bob Otlet, Jill Walker or Ian Mather at the address above.